

chromperfect® I SEVEN™

Multi-instrument Chromatography Data Systems
for client server or stand alone installations

Chromperfect®, first released in 1982, is still manufactured in the USA by a privately owned and managed company. There are now over 10,000 systems installed worldwide, supported by a network of global offices and distributors.

Chromperfect® has been leading the chromatography software industry for 30 years and continues to be the first choice for chemists today!





The market leader... just got **BETTER!**

For over a decade the flagship multi-instrument chromatography data system was Chromperfect[®] Spirit[™], this award winning product has recently been replaced with the new, improved, modern and more powerful Chromperfect[®] Seven[™] range of software.

Chromperfect[®] Seven[™] offers unrivaled levels of flexibility and is completely configurable to the customers requirements. This means it is the perfect solution for any multiple instrument laboratory, from small facilities with three or more chromatographs to laboratories with hundreds of users and instruments, who require the security and flexibility of a distributed client server data system.

▶▶▶ Chromperfect® Seven™ is the only CDS that gives chromatographers complete freedom of choice when selecting hardware and software appropriate for the laboratory.

SEVEN

Got 7890's GC's? But still love your old 5890/6890's?

Chromperfect® Seven™ is the only CDS that gives chromatographers complete freedom of choice when selecting hardware and software appropriate for the laboratory. Data acquisition and data acquisition/instrument control products are available to meet the needs of current and legacy instrumentation. Chemists experience a single user-friendly interface and all data are created in a common file format. This makes training and data transfer to the rest of the enterprise surprisingly simple.

Unique and flexible client/server implementation

Chromperfect Seven is now the ONLY credible INDEPENDENT client server chromatography data system.

Our unique client/server software technology blends users and instruments across the enterprise.

The acquisition client presents virtual instruments that provide users with a common GUI for all their chromatography instrumentation. The data acquisition server handles the different instrument hardware requirements behind the scene. Instruments are securely "claimed" by users. Once claimed, only users with sufficient privileges can control the instrument. Other users have freedom to view status and acquiring chromatograms remotely.



▶▶▶ Chromperfect's[®] data acquisition module allows you to start processing your data AND get results before the run is even finished!



Flexible and powerful data acquisition

At the heart of Chromperfect[®] data acquisition procedures are two very simple philosophies:

1 Inclusive support for all your instruments!

Have you noticed how other software vendors are removing legacy instruments support from their software and abandoning their customers? Chromperfect[®] has no hardware axe to grind, this allows our customers to utilize new and legacy instrumentation from any manufacturer using one software system!

- Connect to any brand or model of chromatography instrument.
- Support for single or dual channel acquisition for all legacy instruments.
- Full network connectivity for all instruments, regardless of age or type.
- Digital data acquisition and instrument/autosampler control.

2 Save time and get results FASTER!

Chromperfect's[®] data acquisition module allows you to start processing your data AND get results before the run is even finished!

- Real-time integration, peak labeling and reporting as data is acquiring.
- Make decisions early in the run saving time, samples, and other resources.
- Method fine tuning in real time!
- Adjustment plots include scaling, labeling and comparisons,
- With additional analyze only licenses, users can even review and interact with their data from a remote location during the data acquisition cycle!

Available options

- Chromperfect[®] SEC/GPC Viscosity
- Chromperfect[®] Simulated Distillation
- Chromperfect[®] Sample Automation
- Chromperfect[®] Analog-Out Software for Process Control
- Chromperfect[®] Streamlines Multi-Port VICI Valve Control
- Chromperfect[®] Instrumentation Set-point Control
- Chromperfect[®] Detailed Hydrocarbon (DHA) and Natural Gas Applications.
- Chemometrics Software- Pirouette, LineUp and InStep from Infometrix, are fully compatible with Chromperfect[®] Seven[™]

Instrument and Hardware Connections													
	Connected	Rec	Instrument	Detector A	Detector B	Detector C	Detector D	Device Unit Description	Inst ID	Unit ID	Device	Board	Unit
1	<input checked="" type="checkbox"/>	<input type="checkbox"/>	HP1100	UV	(N/A)	(N/A)	(N/A)	Tigre II on COM1	1	1	4	1	1
2	<input checked="" type="checkbox"/>	<input type="checkbox"/>	Falcon CALIDUS	FID	(N/A)	(N/A)	(N/A)	Falcon on COM2	7	1	10	1	1
3	<input checked="" type="checkbox"/>	<input type="checkbox"/>	HP6890	FID	(N/A)	(N/A)	(N/A)	HP6890 on COM2	3	1	2	1	1
4	<input checked="" type="checkbox"/>	<input type="checkbox"/>	HP6890	TCD	(N/A)	(N/A)	(N/A)	HP6890 on COM3	4	2	2	2	1
5	<input checked="" type="checkbox"/>	<input type="checkbox"/>	Legacy GC	FID	(N/A)	(N/A)	(N/A)	Tigre III on USB 0	8	1	3	1	1
6	<input checked="" type="checkbox"/>	<input type="checkbox"/>	Legacy GC	FID	(N/A)	(N/A)	(N/A)	Tigre III on USB 0	9	2	3	1	2
7	<input checked="" type="checkbox"/>	<input type="checkbox"/>	Agilent 7890	FID	TCD			HP7890 on IP 192.100.2.12	6	1	7	1	1
8	<input checked="" type="checkbox"/>	<input type="checkbox"/>	Agilent 7890	FID	TCD		(N/A)	HP7890 on IP 192.100.2.54	6	2	7	2	1
9	<input checked="" type="checkbox"/>	<input type="checkbox"/>	Varian 3800	FID	(N/A)	(N/A)	(N/A)	Varian 3800 on IP 0.0.0.0	10	1	9	1	1

Move Up Move Down OK Cancel

SEVEN

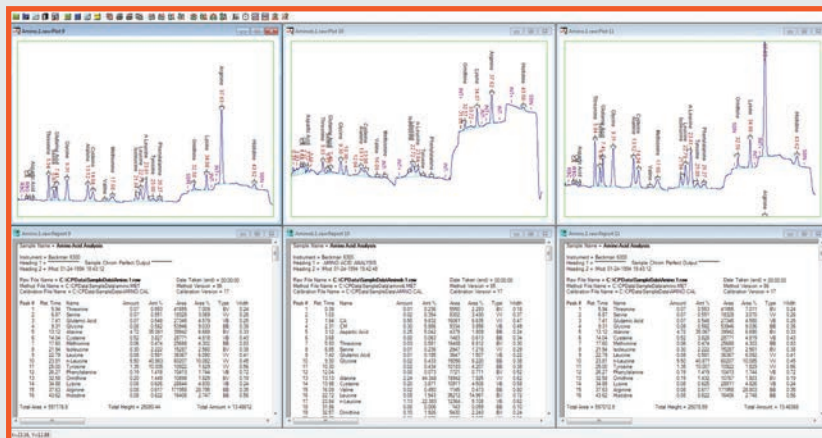
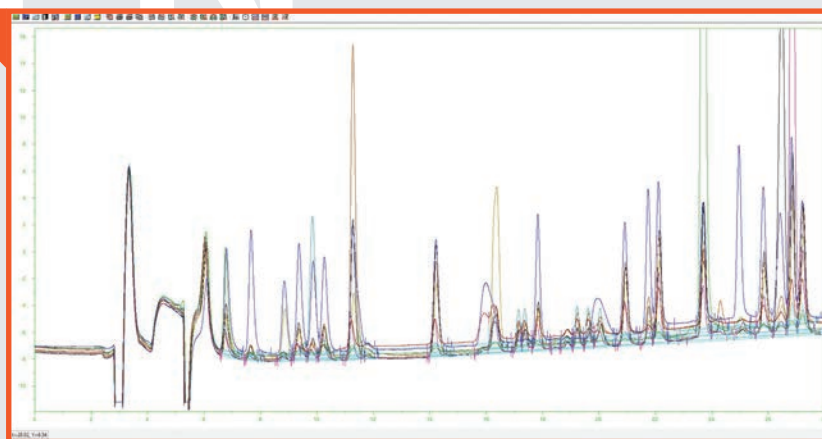
Data analysis

Chromperfect® offers freedom to choose how many chromatograms are displayed and analyzed at a time. Key chromatogram information is only one right click away and active chromatograms can be displayed in tiled or overlaid view alongside the chromatography report.

Every chromatogram displayed in the analysis program can be individually adjusted for plotting, integration, and reporting.

Programs such as Rapid Review, Batch Processing, and Summary can all be accessed directly from the analysis program to allow users to review, reprocess, and report data from multiple files with results transferable to Microsoft Excel or other programs.

The CIMS utility allows users to treat Chromperfect® files just like a database, to find and select files based on hundreds of possible search criteria.



GLP/GMP features

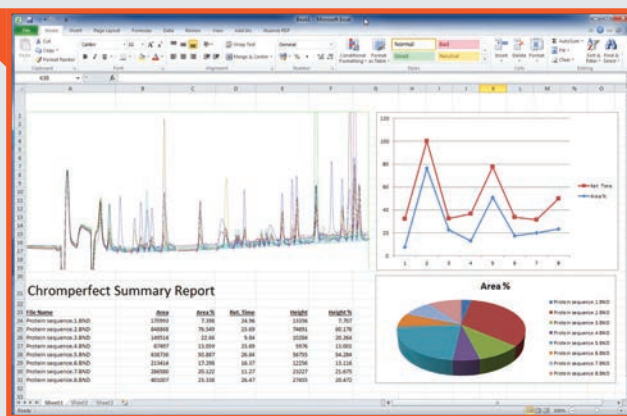
Chromperfect® fully documents all methods, sequences, and reports including instrument run logs. These features provide a complete, unbroken link from the initial experiment to the final results. Powerful new CP to DB module allows full and seamless integration with any LIMS or database program.

Secure and protect data with System Manager

Chromperfect® features a fully integrated System Manager which offers complete control over user privileges and system access, helping to protect important data and files. It is completely configurable, 100% secure and provides a complete activity log for each user.

Users discover that Chromperfect has all the power and flexibility they need to produce reports, however data and graphics can easily be transferred to third party software packages such as word processors, spread sheets and databases for further data manipulation and graphing.

1. A drag and drop interface means designing reports is both easy and flexible
2. It takes seconds to add new elements to your reports, from standard items such as retention time to complex calculations and formulas
3. The ability to include formula offers automation for the most complex calculations
4. Supports unlimited report templates and multiple reports can be produced for each analysis manually or automatically at the end of the run



The most powerful chromatography reporting software available ANYWHERE!

Chromperfect[®] offers the most powerful reporting capabilities of any chromatography data system. We can address ANY reporting challenges you have because ONLY Chromperfect[®] offers power comparable with a spreadsheet or database directly within the chromatography data system.

Chromperfect[®] is shipped with over fifty custom report templates, which are completely configurable for your

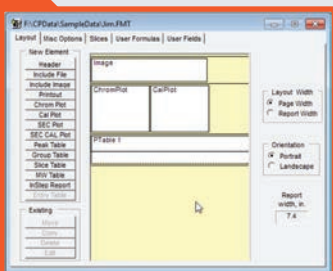
laboratory. We also offer limitless possibilities for you to design your own report templates from scratch!

Chromperfect[®] even allows multiple reports to be automatically created from a single analysis and sent to the printer, produced as PDF files or sent straight to the company LIMS system.

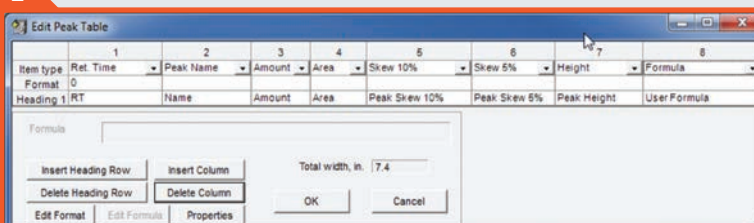
Powerful reporting made easy!

- Unlimited reporting capabilities.
- Any number of reports per analysis.
- Rapid review of reports.
- Easy data transfer of results.
- Easy LIMS interface.
- Automatically create pdf files.

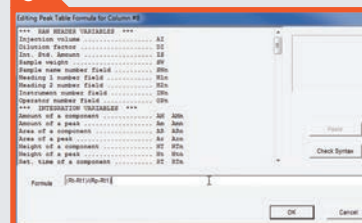
1



2



3

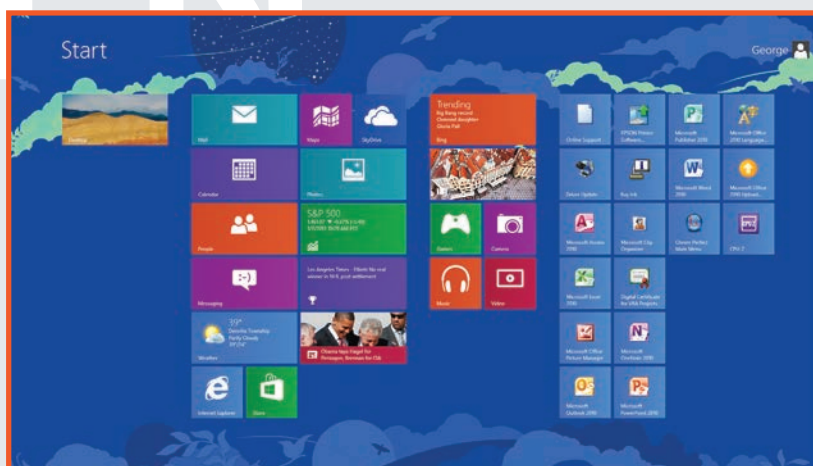


4



▶▶▶ No matter what happens in the broader IT or instrumentation market, Chromperfect® will continue to offer market leading, modern and affordable solutions for laboratories around the world (regardless of their chromatography instrumentation).

SEVEN



Choice of thousands of chemists worldwide

The purchase of a Chromatography Data System, no matter how large or small, is considered an investment in the productivity of the laboratory. We recognize that this investment requires confidence in a company, its products, strategy, support, and management. By installing Chromperfect® in your lab you will be joining our family of over 10,000 delighted users around the world and we look forward to supporting you for many years to come through our extended support program.

Chromperfect® from MS Dos to Windows 8!

In recent years chromatography software companies and instrument manufacturers have simply abandoned software used by thousands of laboratories. We are proud of our history, and have never abandoned a single customer. Chromperfect® has maintained an unbroken program of backward compatibility from 1982 to the present day. To put this in context, this represents a compatible file structure from MS dos to Windows 8!

No matter what happens in the broader IT or instrumentation market, Chromperfect® will continue to offer market leading, modern and affordable solutions for laboratories around the world (regardless of their chromatography instrumentation). We plan to offer an affordable and sustained upgrade path for our customers for the next 30 years!

SEVEN

chromperfect®
1SEVEN™

US TEL (973) 586 8551

EUROPE TEL +44 (0) 1337 326933

www.chromperfect.com