

chromperfect®

Digital Data Acquisition and instrument control module

Chromperfect® supports the Perkin Elmer Clarus 480, 580 and 680 GC's



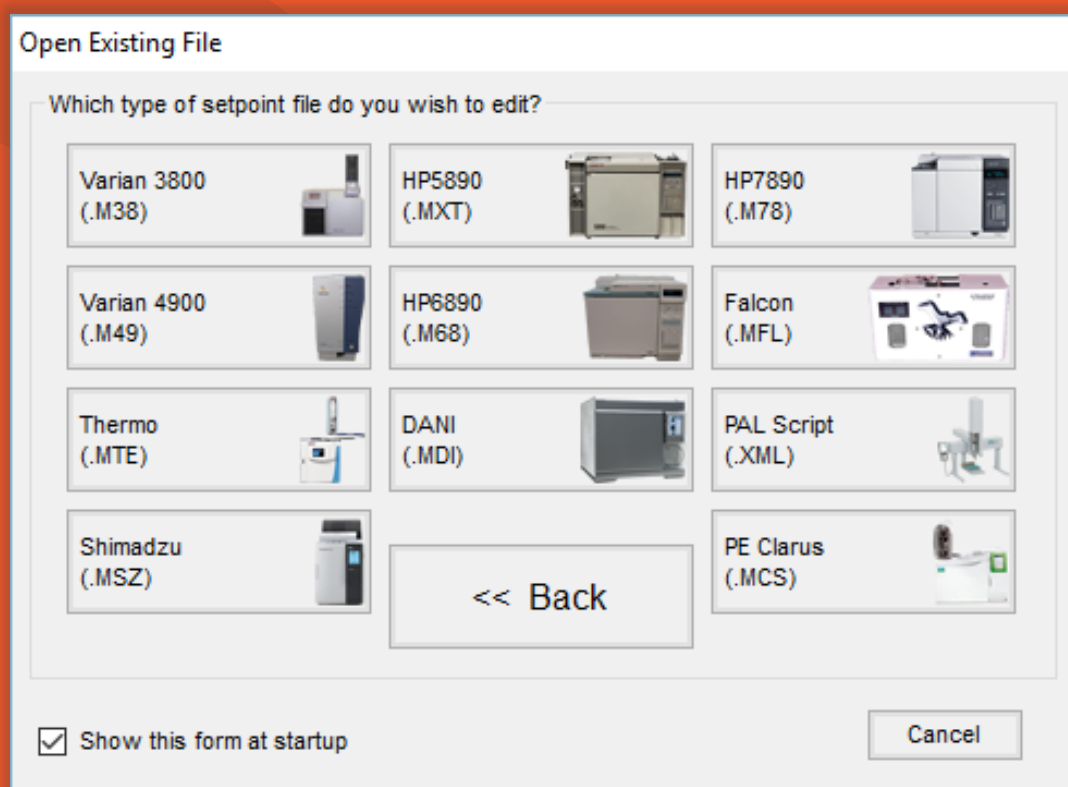


▶▶▶ Chromperfect® is the only CDS that gives chromatographers complete freedom of choice when selecting hardware and software appropriate for the laboratory.

“best of breed” for chromatography software and instrumentation

For over three decades the Chromperfect data system has offered unparelled choice for customers who demand a “best of breed” solution, allowing the widest choice in Chromatography instrumentation.

The launch of a dedicated driver for the Clarus range continues the tradition and offers full instrument and autosampler control of Perkin Elmer’s flagship GC’s.





▶▶▶ PerkinElmer® family of Clarus® GC instruments

Clarus 680 GC

Designed for fast-paced, high-volume laboratories that need to speed up analytical cycle times. It maximizes throughput with the fastest injection-to-injection time of any conventional Gas Chromatograph.

Clarus 580 GC

Meets the needs of facilities that require a rugged, high-quality instrument that provides accurate and efficient performance day after day, while being extremely user-friendly.

Clarus 480 GC

Developed in response to the strong demand for reliable, world-class GC technology in budget-conscious laboratories. Meets diverse application requirements without sacrificing performance.

More information about the Clarus range is available at <http://www.perkinelmer.com/category/gas-chromatography-gc-instruments>

Instrument/Autosampler Control

Ramp #	Rate Deg/Min	Final Temp	Final Time, min	Ramp Start, min	Ramp End, min
1	10	110	0	1.5	10
2	15	260	0	10	19.33
3	0	0	0		
4	0	0	0		

- Chromperfect fully controls both the Clarus instrument and autosampler
- Common editor for fast and intuitive method development
- Fully automated sequences with individual instrument settings for each run
- Serial or ethernet connection to Perkin Elmer Clarus GC's.
- Systems available for single instruments, multiple instruments or client server installation

Common User Interface

Chromperfect continues to support both new and legacy chromatography instrumentation, on the same PC, with a common user interface. This means that laboratories can continue to use older instruments which have been obsoleted by other software systems. Chromperfect saves time and money for staff training costs as the system can be interfaced with ANY instrument and provide a standard throughout the lab.



▶▶▶ Chromperfect's® data acquisition module allows you to start processing your data AND get results before the run is even finished!



Flexible and powerful data acquisition

At the heart of Chromperfect® data acquisition procedures are two very simple philosophies:

1 Inclusive support for all your instruments!

Have you noticed how other software vendors are removing legacy instruments support from their software and abandoning their customers? Chromperfect® has no hardware axe to grind. This allows our customers to utilize new and legacy instrumentation from any manufacturer using one software system!

- Connect to any brand or model of chromatography instrument.
- Support for single or dual channel acquisition for all legacy instruments.
- Full network connectivity for all instruments, regardless of age or type.
- Digital data acquisition and instrument/autosampler control.

2 Save time and get results FASTER!

Chromperfect's® data acquisition module allows you to start processing your data AND get results before the run is even finished!

- Real-time integration, peak labeling and reporting as data is acquiring.
- Make decisions early in the run saving time, samples, and other resources.
- Method fine tuning in real time!
- Adjustment plots include scaling, labeling and comparisons,
- With additional analyze only licenses, users can even review and interact with their data from a remote location during the data acquisition cycle!

Available options

- Chromperfect® SEC/GPC Viscosity
- Chromperfect® Simulated Distillation
- Chromperfect® Sample Automation
- Chromperfect® Analog-Out Software for Process Control
- Chromperfect® Streamlines Multi-Port VICI Valve Control
- Chromperfect® Instrumentation Set-point Control
- Chromperfect® Detailed Hydrocarbon (DHA) and Natural Gas Applications.
- Chemometrics Software- Pirouette, LineUp and InStep from Infometrix, are fully compatible with Chromperfect® Seven™

	Instrument	Control
1 A	Clarus 680	Control
2 A	Clarus 480	Control
3 A	HP5890	Control
4 A	HLPC	Control
5 A	Agilent 7890	Control

The screenshot also displays three chromatograms: HOS90 - FID, HOS90 - RID, and HPLC-UV, each showing detector response versus time in minutes.



chromperfect

US TEL (973) 586 8551

EUROPE TEL +44 (0) 1337 326933

www.chromperfect.com